

CAPLESJEFFERSON**ARCHITECTS**PC

*Intergen Senior Housing*



## INTERGEN SENIOR HOUSING

Chicago, Illinois

2006

*A housing development for grandparents who raise their grandchildren, with a Head Start school and a senior citizens' center. We started by giving each grandmother a protected, covered path sheltering the walk between car and home from Chicago's fierce winters. Each dwelling accesses a communal garden and a protected porch overlooking streets or courts. Each unit captures generous sunlight in all rooms including the winter garden at the heart of each home.*

10 units of housing for seniors who are raising their grandchildren Integrated with a senior center for the neighborhood, and a Headstart preschool.

The location is a half block in South Chicago, in a former industrial area now evolving into a residential zone.

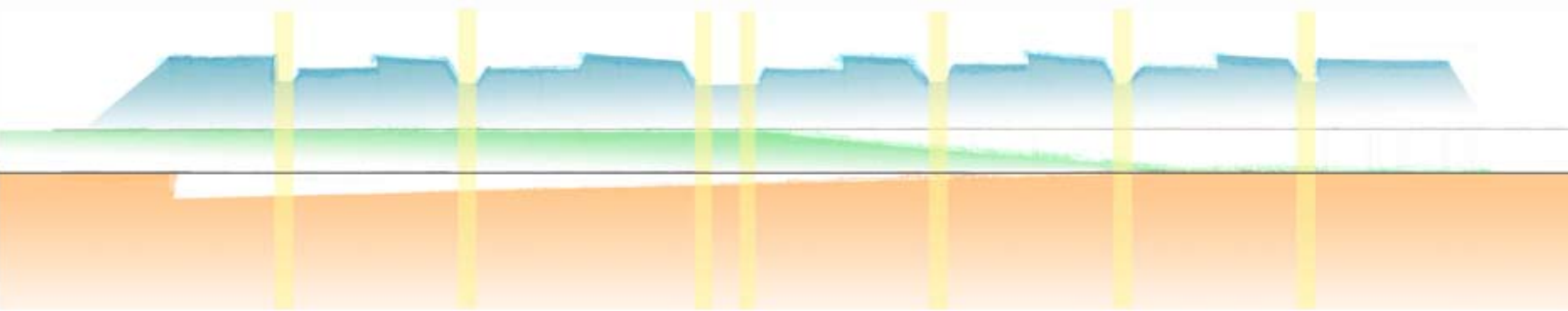
The objectives are to use the site intensely  
- Disposing the buildings around a variety of courtyards  
- Creating activity centers for all ages

The pedestrian paths from parking to units and center are protected from winter snows and summer heat.

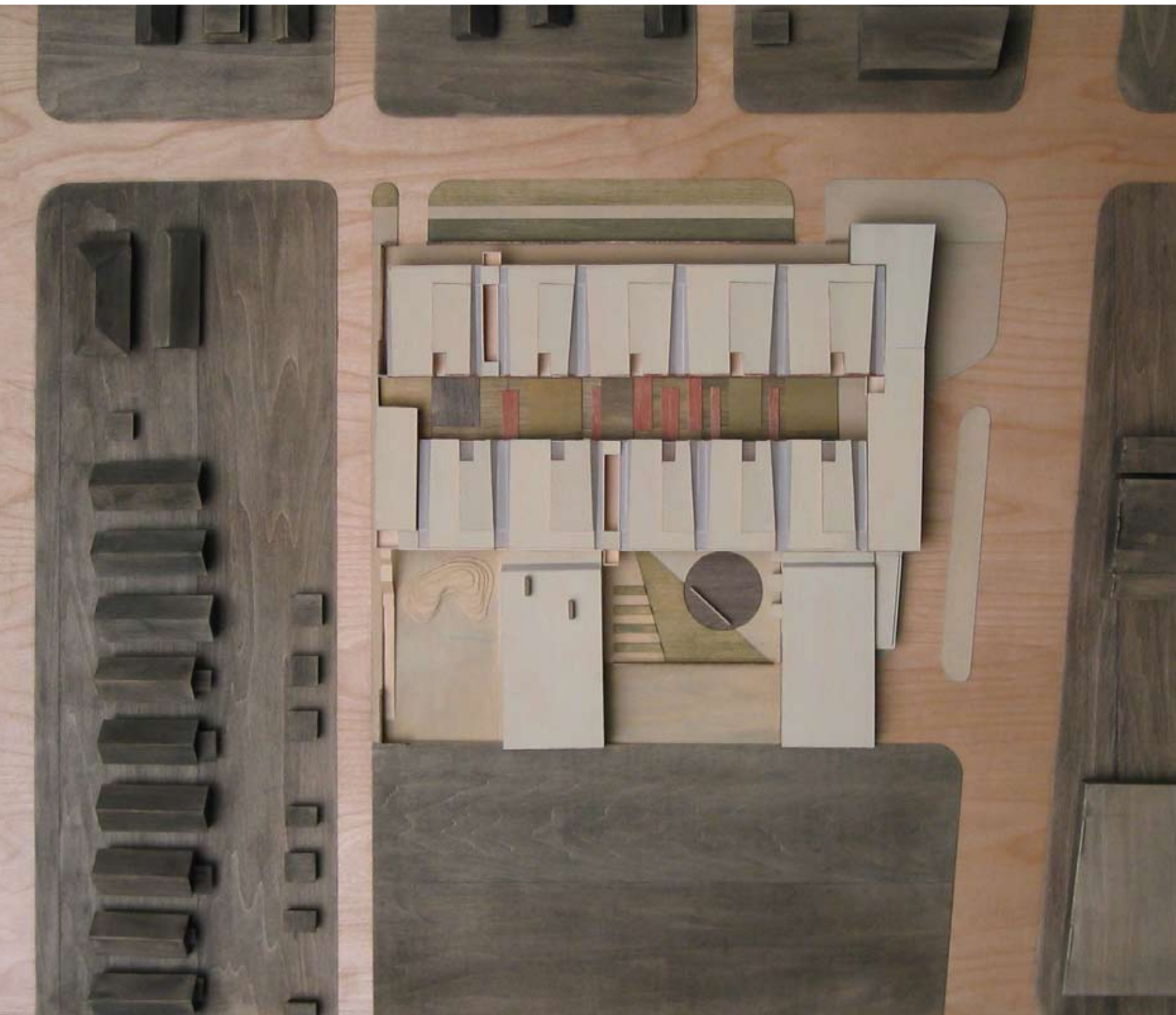
The project is, of course, fully handicapped accessible, and is designed to receive a gold LEED rating.



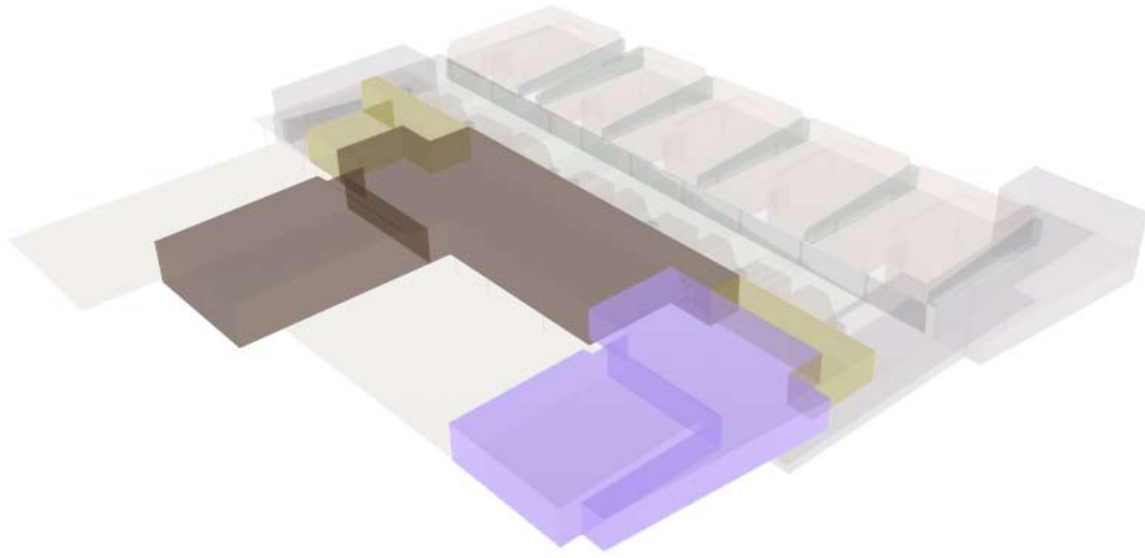
Above and Below: Continuous skylight along bedroom walls separating units and lighting the garage below



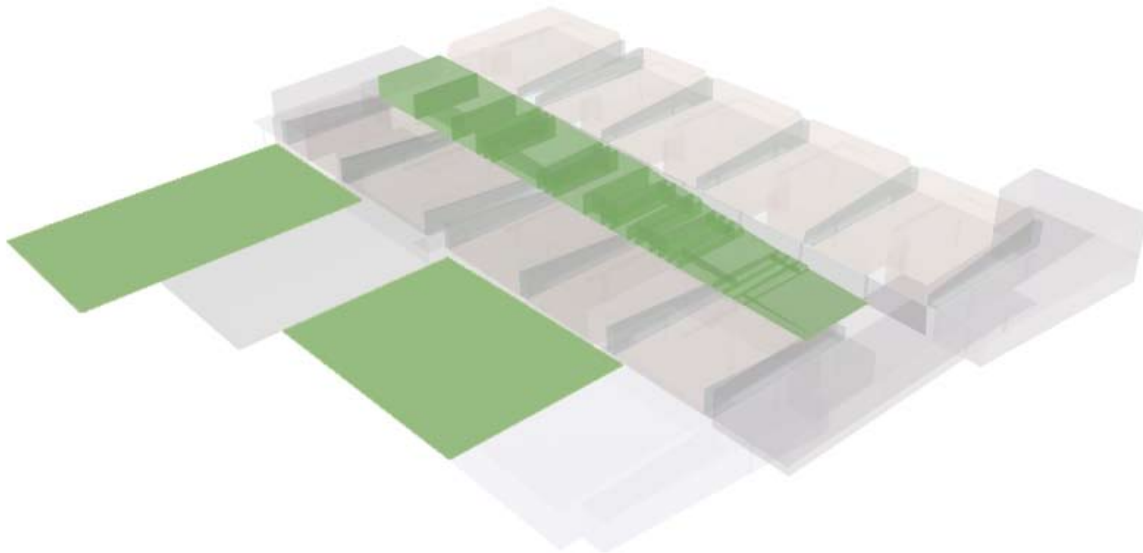
Concept diagram



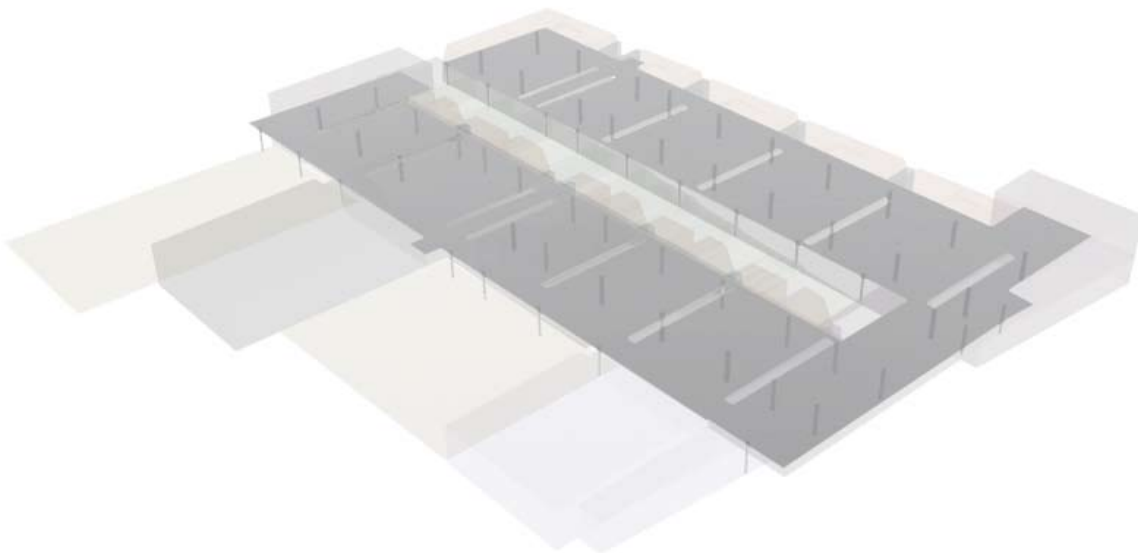
Site model



2 LEARNING CENTERS  
 Headstart  
 Senior Center

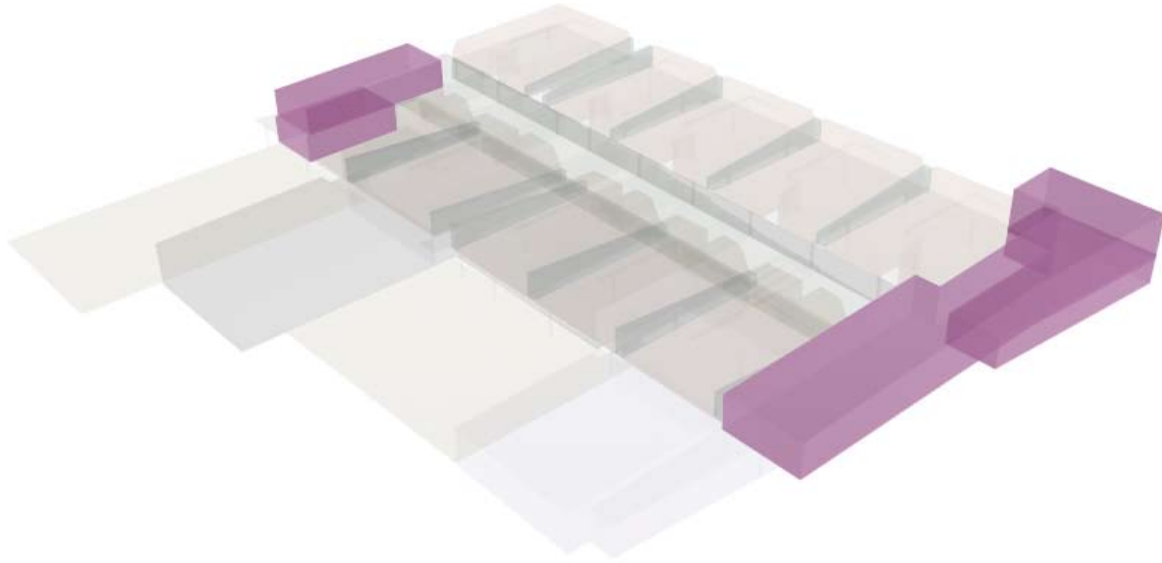


3 COURTS  
 Commons between housing units  
 Playscape for Headstart  
 Basketball/ Skateboard for teens



2 CONCRETE PLATFORMS  
 Raised housing units above street  
 Protect parking from weather

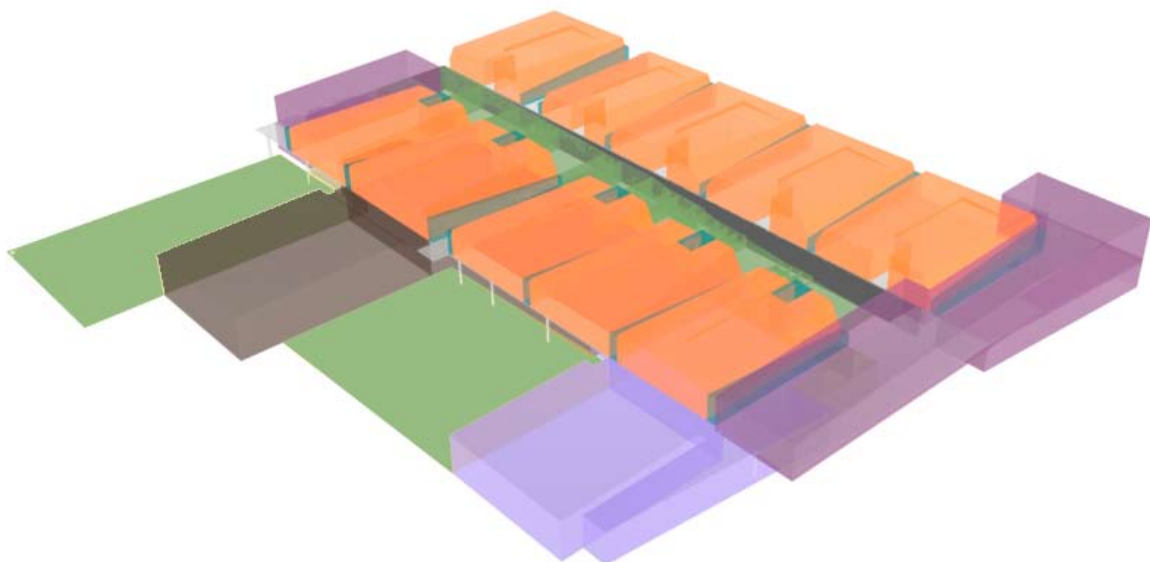




2 HOUSING SUPPORT CENTERS  
Homework Center  
Common Room



10 HOUSING UNITS



COMPOSITE DIAGRAM

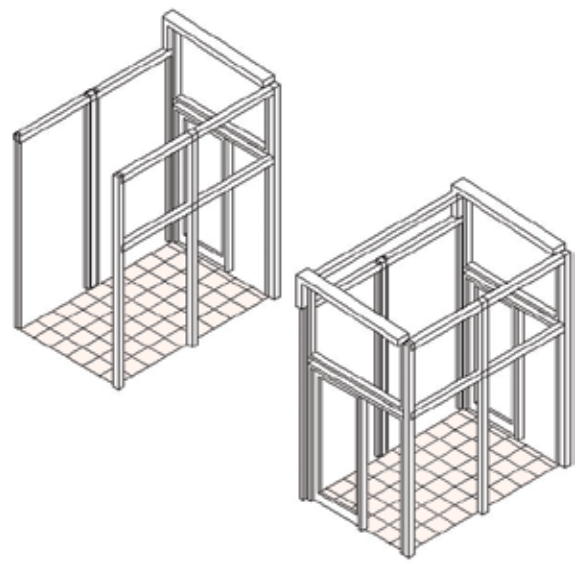


- GRADE LEVEL
- 1 Housing Lobby
  - 2 Housing Parking
  - 3 Housing Commons
  - 4 Headstart Center
  - 5 Headstart Playscape
  - 6 Teachers Parking
  - 7 Senior Center
  - 8 Basketball/ Skateboard

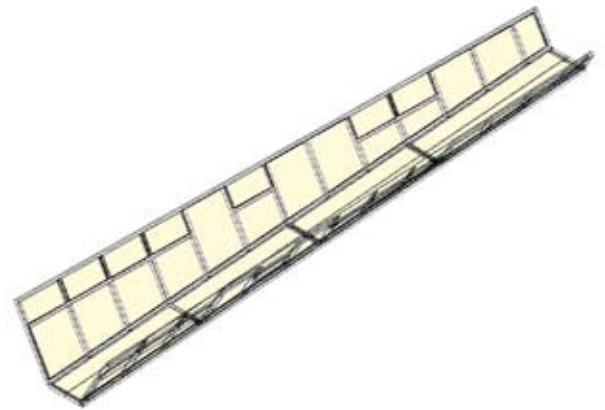


- UPPER LEVEL
- 1 Glazed Corridor & Lobby
  - 2 Homework Center
  - 3 Three Bedroom Units
  - 4 Four Bedroom Units
  - 5 Common Room
  - 6 Outdoor Commons

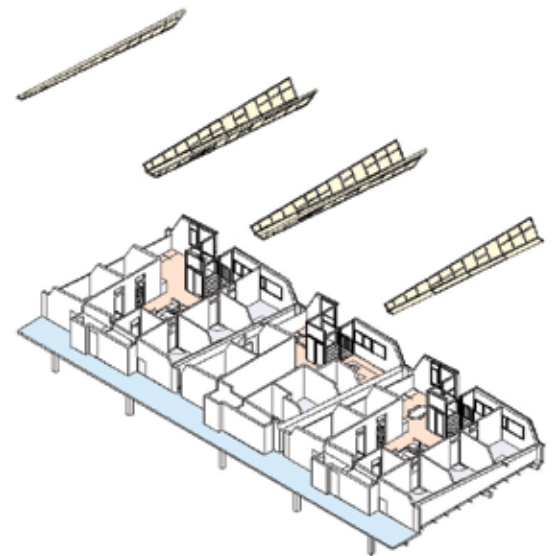
Common areas - dining, sitting, studies are clustered around skyrooms. Skyrooms provide light and a quick place to be outdoors



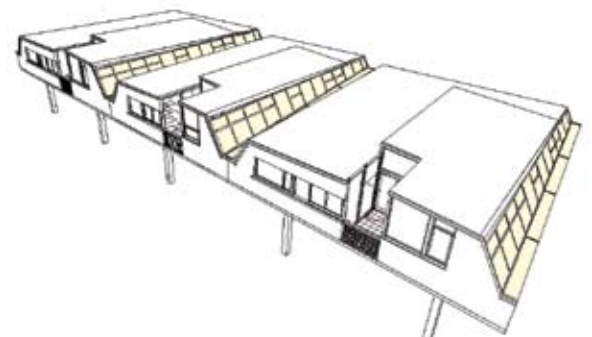
Skylights between units provide daylight parking below and daylight into all unit separates units physically and acoustic



Sheltered corridor protects grandparents and children from the weather and remains open to public view



Composite diagram







Section model

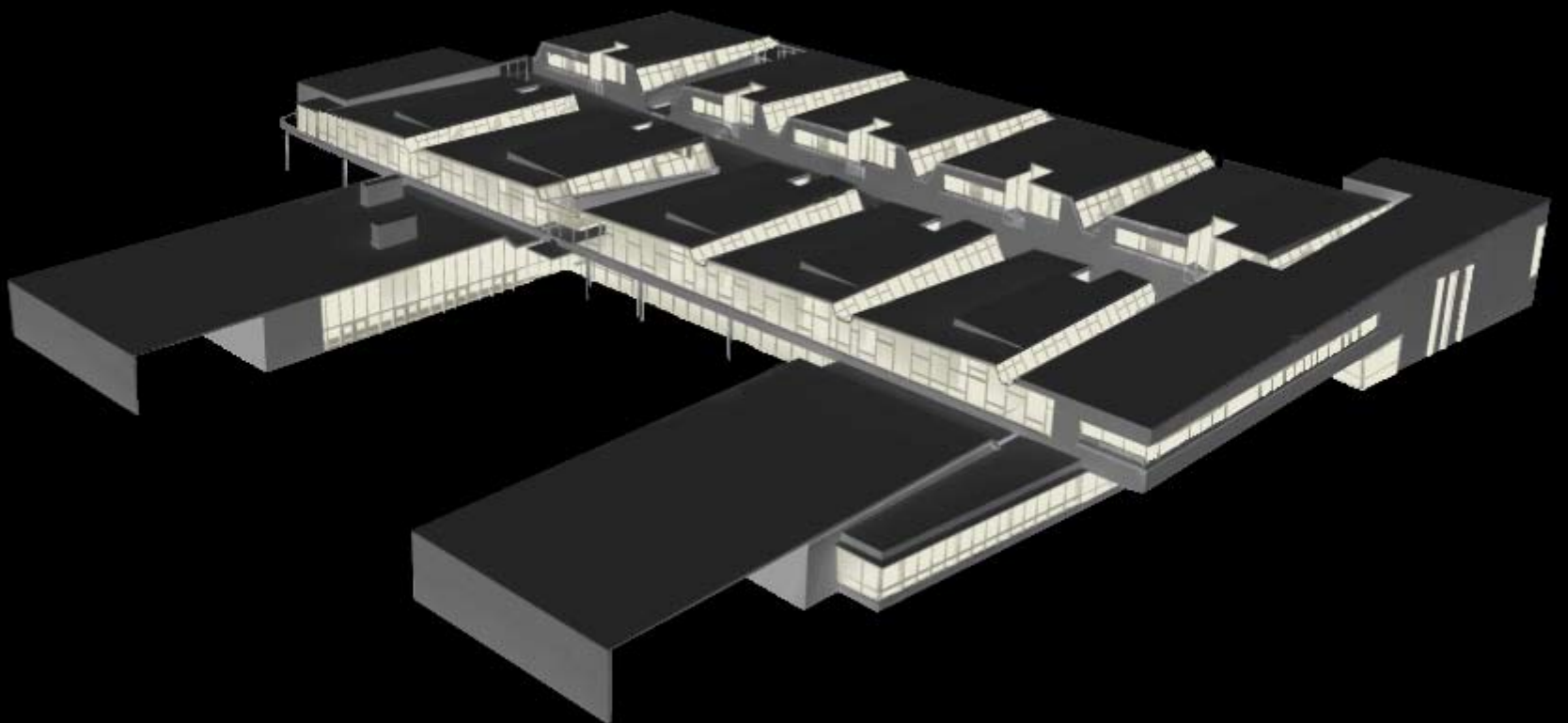


Site model

Top: Street view of parking and glazed public corridor;  
Middle: Section through commons between housing units;  
Bottom: Street view of Headstart, senior and housing lobbies  
with view through to commons



Night Axonometric





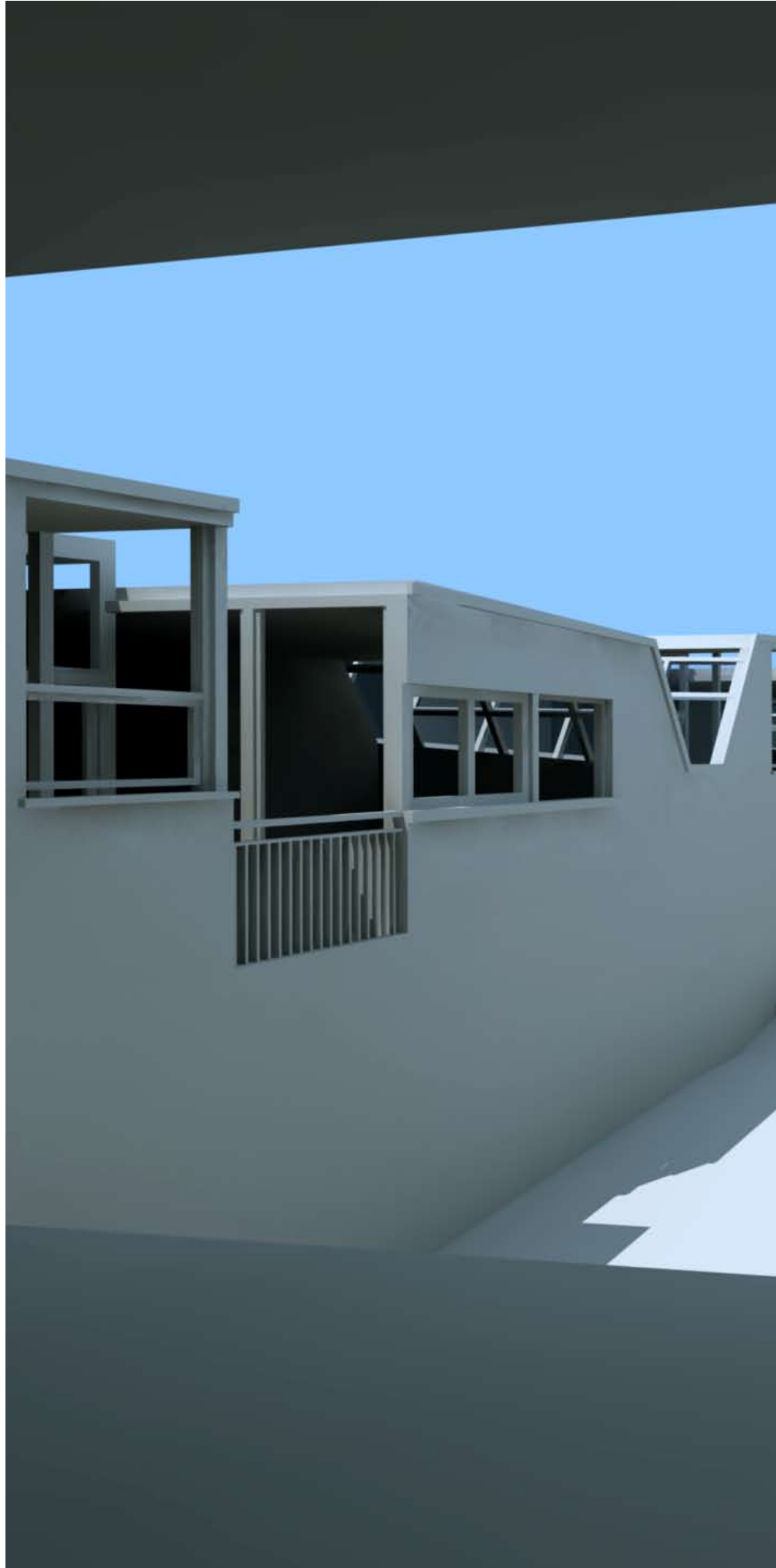
Winter garden at center of shared spaces within housing unit



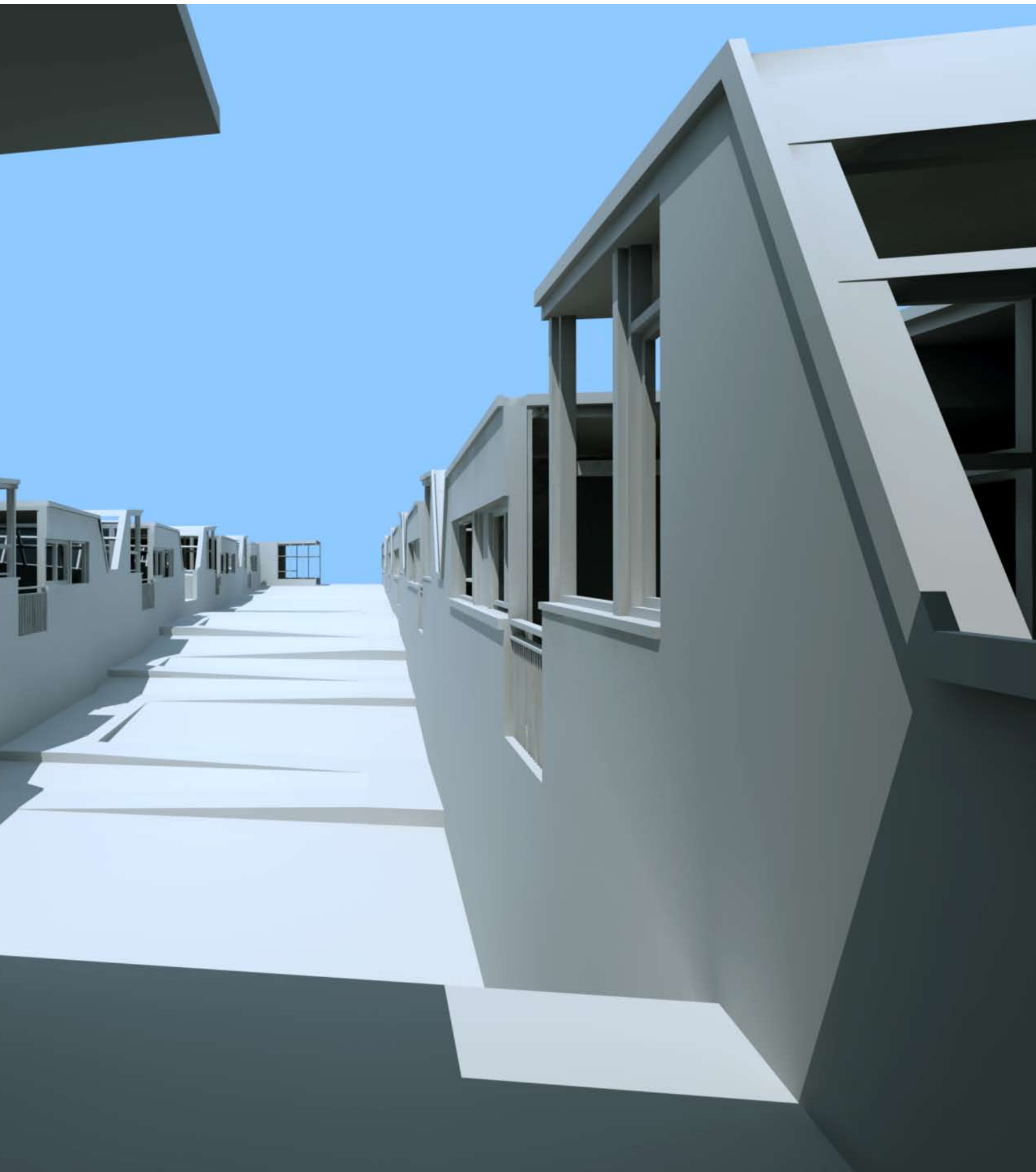
Winter garden viewed from dining



Housing units clustered around commons







Housing units clustered around commons



CAPLESJEFFERSON **ARCHITECTS** PC | 37-18 Northern Boulevard, Suite 319 | Long Island City, NY 11101 | [www.capjeff.com](http://www.capjeff.com)